



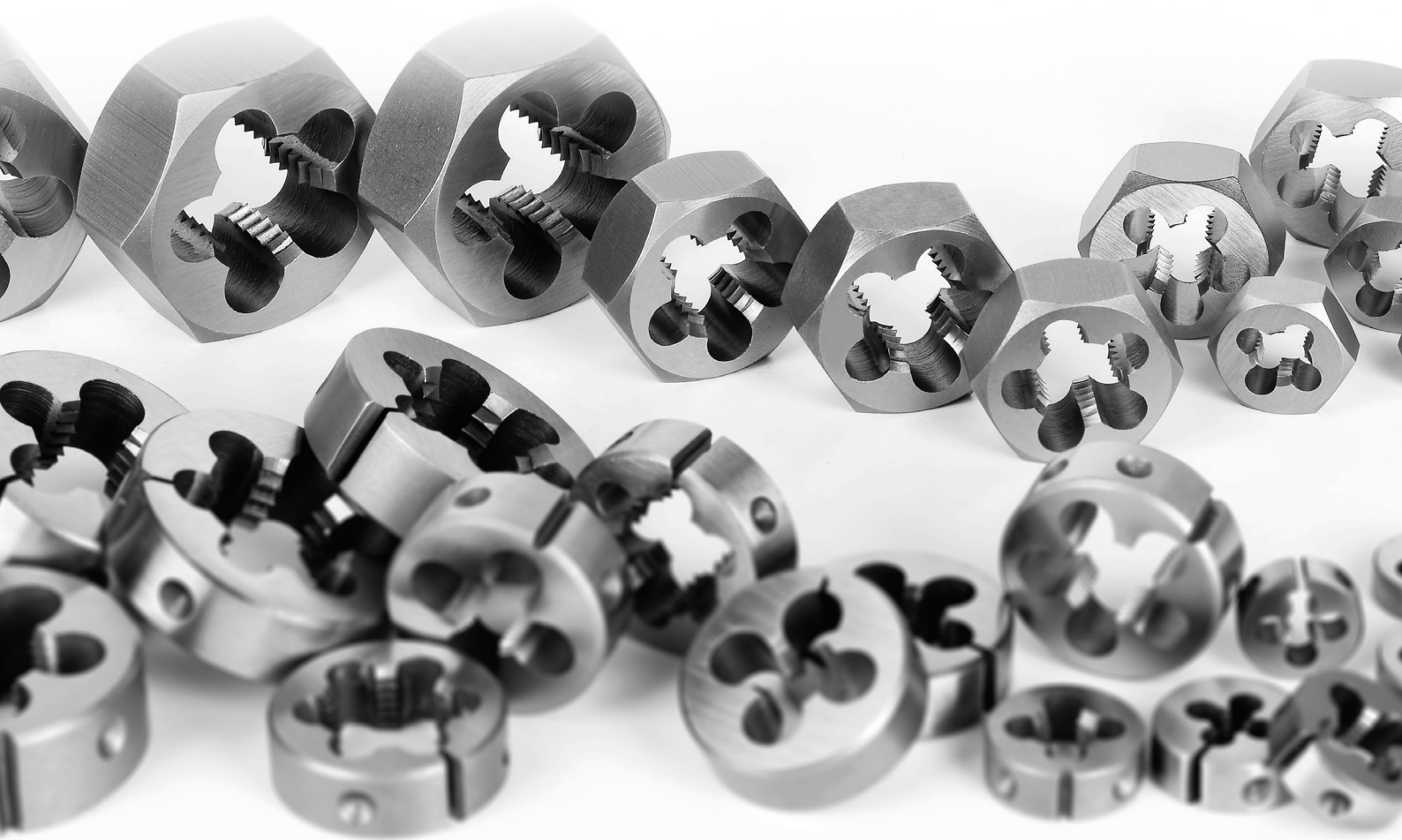
TOTEM



High Performance Cutting Tools

PRICE LIST

EFFECTIVE 04.05.2022



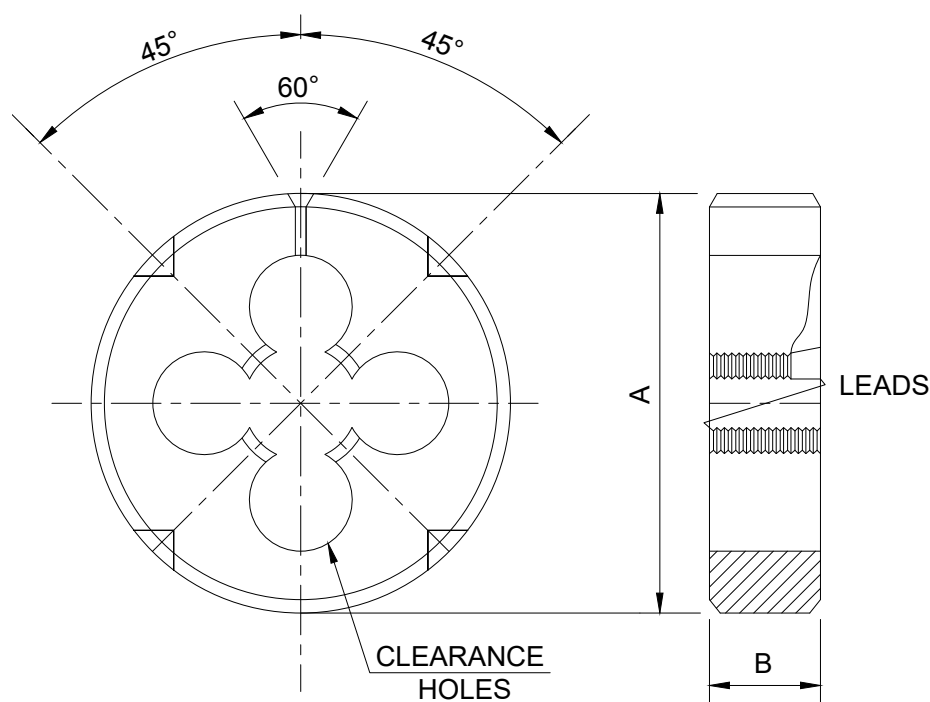
DIES & DIE NUTS



Forbes & Company Limited

Hints on use of circular dies

- Always ensure the die is presented to the bolt squarely, and is concentric, if this is not correct the die will not cut evenly on all lands.
- When adjusting a split die, try to avoid opening it out excessively, as it tends to rubbing or breakage.
- When closing in, do not apply all the pressure on one position but keep it even. Dies will cut satisfactorily provided adjustment is kept in the range of approximately 0.4 mm
- Thread tearing and teeth chipping are due to incorrect sharpening of lands or due to causing the die to hit the shoulder.
- Before starting a die always chamfer the end of the bolt at around 45 to allow the die to start cutting gently, failure to do this throws a sudden jerk on to the cutting edge, causing chipping.
- The size of the bolt to be threaded should be basic size, as an oversize material will put an extra load on the die whilst cutting.
- Whenever dies are used on machine it is recommended to use ground thread dies.
- When the die is to be used on machine without lead screw feed, ensure that the die will be able to advance in to the hole freely. This ensures that it will cut its own correct pitch.
- Efficient threading using die has its optimum speed. Always start with lower speeds and increase slowly if work permits.
- First class threading can only be done with copious supply of proper lubricant. Use of lubricant is as important as its choice. Choose suitable lubricant.



High Speed Steel Cut Thread Circular Split Dies



ALL RATES ARE IN RUPEES PER PIECE (Excl. of GST)

OD INCH	SIZE INCH	Each (₹)								
		BSW	BSF	UNF/ UNC	BSB	BSCYCLE	ME	BSP	BSCON	BA
13/16"	0	-	-		-	-	-	-	-	364
	1	-	-		-	-	-	-	-	364
	2	-	-		-	-	-	-	-	364
	3	-	-	416	-	-	-	-	-	364
	4	-	-	416	-	-	-	-	-	364
	5	-	-	416	-	-	-	-	-	364
	6	-	-	416	-	-	-	-	-	364
	7	-	-		-	-	-	-	-	416
	8	-	-	416	-	-	-	-	-	416
	9	-	-		-	-	-	-	-	536
	10	-	-	416	-	-	-	-	-	536
	11	-	-		-	-	-	-	-	536
	12	-	-	416	-	-	-	-	-	536
	1/16	536	-		-	-	-	-	-	-
	3/32	416	-		-	-	-	-	-	-
	1/8	364	-		-	-	364	-	-	-
	5/32	364	-		-	-	364	-	-	-
	3/16	364	364		-	-	364	-	-	-
	7/32	364	364		-	-	364	-	-	-
	1/4	364	364	364	364	-	364	-	364	-
1"	1/8					-		518	-	-
	1/4	518	518	518	518	518	518	-	-	-
	9/32	518	518				518	-	-	-
	5/16	518	518	518	518	518	518	-	-	-
	3/8	518	518	518	518	518	518	-	-	-
	0.308 X 30				-	518		-	-	-

ALL RATES ARE IN RUPEES PER PIECE (Excl. of GST)

OD INCH	SIZE INCH	Each (₹)					
		BSW	BSF	UNF	UNC	BSP	BSCON
1.1/2"	1/4	-	-	-	-	862	
	3/8	-	-	-	-	862	
	7/16	862	862	862	862		
	1/2	862	862	862	862	862	862
	9/16	862	862	862	862		
	5/8	862	862	862	862		862
	11/16	862					
	3/4	862	862	862	862		862
2"	1/2					1373	
	5/8					1373	
	3/4					1373	
	7/8	1373	1373	1373	1373	1373	
	1"	1373	1373	1373	1373	1373	
2.1/4"	7/8					1734	
	1.1/8	1813	1813	1813	1813		
	1.1/4	1813	1813	1813	1813		
2.1/2"	1.1/8					2851	
	1.1/4	2851				2851	
	1.3/8	2851	2851	2851	2851		
	1.1/2	2851	2851	2851	2851		
3"	1.1/4					4025	
	1.1/2	4025	4025	4025	4025		4025
4"	1.3/8					5616	
	1.1/2					5616	
	1.3/4	5616	5616	5616	5616	5616	
	2"	5616	5616	5616	5616	5616	

MOQ Matrix	
OD	QTY
2.1/4"	5
2.1/2"	5
3"	3
4"	3

High Speed Steel Cut Thread Circular Split Dies



ALL RATES ARE IN RUPEES PER PIECE (Excl. of GST)

OD INCH	SIZE MM	Each ₹	OD INCH	SIZE MM	Each ₹	OD INCH	SIZE MM	Each ₹
13/16"	1.6 X 0.35	536	1"	6 X 0.5	554	1.1/2"	11 X 1.0	862
	2 X 0.4	416		6 X 0.75	554		11 X 1.5	862
	2.2 X 0.45	416		6 X 1	518		12 X 1	862
	2.3 X 0.4	416		7 X 0.75	554		12 X 1.25	862
	2.5 X 0.45	416		7 X 1	518		12 X 1.5	862
	2.6 X 0.45	416		8 X 0.75	554		12 X 1.75	862
	3 X 0.35, 0.60	416		8 X 1.0	554		14 X 1	862
	3 X 0.5	364		8 X 1.25	518		14 X 1.25	862
	3.5 X 0.6	364		9 X 0.75	554		14 X 1.5	862
	4 X 0.35, 0.50	416		9 X 1.0	554		14 X 2.0	862
	4 X 0.7	364		9 X 1.25	518		15 X 1.5	862
	4 X 0.75	416		10 X 0.5	554		16 X 1	862
	4.5 X 0.50	416		10 X 0.75	554		16 X 1.5	862
	4.5 X 0.75	416		10 X 1.25	554		16 X 2.0	862
	5 X 0.8	364		10 X 1.5	518		18 X 1.5	862
	5 X 0.9	416		-			18 X 2.5	862
	5.5 X 0.75	416		-			20 X 1.5	862
	5.5 X 0.5, 0.9	416		-			20 X 2.5	862
	6 X 0.5, 0.75	416		-			-	
	6 X 1	364		-			-	
	7 X 0.75	416		-			-	
	7 X 1	416		-			-	
2"	22 X 1.5	1373	2.1/4"	27 X 1.5, 3.0	1813	2.1/2"	34 X 1.5	2851
	22 X 2.5	1373		28 X 1.5	1813		35 X 1.5	2851
	24 X 1, 1.5, 3	1373		30 X 1.5, 3.5	1813		36 X 1.5	2851
	25 X 1.5	1373		32 X 1.5	1813		36 X 4.0	2851
	26 X 1.5	1373		33 X 1.5	1813		40 X 1.5	2851
	-			33 X 3.5	1813		-	-
3"	34 X 1.5	4025	4"	45 X 1.5	5616		-	-
	35 X 1.5	4025		46 X 1.5	5616		-	-
	36 X 1.5, 4.0	4025		48 X 1.5, 5.0	5616		-	-
	38 X 1.5	4025		50 X 1.5	5616		-	-
	39 X 4	4025		52 X 1.5	5616		-	-
	42 X 4.5	4025		55 X 1.5	5616		-	-
	45 X 1.5	4025		60 X 1.5	5616		-	-

ALL RATES ARE IN RUPEES PER PIECE (Excl. of GST)

OD INCH	SIZE INCH	Each (₹)								
		BSW	BSF	UNF/UNC	BSB	BSCYCLE	ME	BSP	BA	WF
13/16"	0	-	-	-	-	-	-	-	101	-
	1	-	-	-	-	-	-	-	101	-
	2	-	-	-	-	-	-	-	101	-
	3	-	-	101	-	-	-	-	101	-
	4	-	-	101	-	-	-	-	101	-
	5	-	-	101	-	-	-	-	101	-
	6	-	-	101	-	-	-	-	101	-
	7	-	-		-	-	-	-	145	-
	8	-	-	101	-	-	-	-	145	-
	9	-	-		-	-	-	-	172	-
	10	-	-	101	-	-	-	-	172	-
	11	-	-		-	-	-	-	245	-
	12	-	-	101	-	-	-	-	245	-
	11/64 X 40, 48	-	-		-	-	-	-		101
	13/64 X 24, 36	-	-		-	-	-	-		101
	3/16 X 28	-	-		-	-	-	-		101
	15/64 X 28, 40	-	-		-	-	-	-		101
	1/4X32	-	-		-	-	-	-		101
	1/16	245	-		-	-	-	-		
	3/32	145	-		-	-	-	-		
	1/8	101	-		-	-	101	-		
	5/32	101	-		-	-	101	-		
	3/16	101	101		-	101	101	-		
	7/32	101	101		-		101	-		
	1/4	101	101	101	101	101	101	-		
1"	5/16 X 30, 40				-			-		158
	3/8 X 40				-			-		158
	1/8				-			158		
	1/4	158	158	158	-		158	-		
	9/32	158	158		-		158	-		
	5/16	158	158	158	-		158	-		
	3/8	158	158	158	-		158	-		
	0.308 X 30				-	158		-		

Carbon Steel Cut Thread Circular Split Dies



ALL RATES ARE IN RUPEES PER PIECE (Excl. of GST)

OD INCH	SIZE INCH	Each (₹)							
		BSW	BSF	UNF / UNC	BSB	BSCYLE	BSP	BSCON	WF
1.1/2"	7/16 X 32, 40	-	-	-	-	-	-	-	334
	1/2 X 32, 40	-	-	-	-	-	-	-	334
	1/4	-	-	-	-	-	334	-	-
	3/8	-	-	-	-	-	334	-	-
	7/16	334	334	334	-	-	-	-	-
	1/2	334	334	334	-	-	334	334	-
	9/16	334	334	334	334	334	-	-	-
	5/8	334	334	334	-	-	-	334	-
	11/16	334	334	-	-	-	-	-	-
	3/4	334	334	334	-	-	-	334	-
2"	1/2	-	-	-	-	-	511	-	-
	5/8	-	-	-	-	-	511	-	-
	3/4	-	-	-	-	-	511	-	-
	7/8	511	511	511	-	-	511	-	-
	1"	511	511	511	-	-	511	511	-
2.1/4"	1.1/8	1034	1034	1034	-	-	-	-	-
	1.1/4	1034	1034	1034	-	-	-	-	-
2.1/2"	1.1/8	-	-	-	-	-	1458	-	-
	1.1/4	-	-	-	-	-	1458	-	-
	1.3/8	1458	1458	1458	-	-	-	-	-
	1.1/2	1458	1458	1458	-	-	-	-	-
3"	1.1/4	-	-	-	-	-	1644	1644	-
	1.1/2	1644	1644	1644	-	-	-	-	-
4"	1.3/8	-	-	-	-	-	2416	-	-
	1.1/2	-	-	-	-	-	2416	-	-
	1.3/4	2416	2416	2416	-	-	2416	-	-
	2"	2416	2416	2416	-	-	2416	-	-

MOQ Matrix	
OD	QTY
2.1/4"	5
2.1/2"	5
3"	3
4"	3

ALL RATES ARE IN RUPEES PER PIECE (Excl. of GST)

OD INCH	SIZE MM	Each ₹	OD INCH	SIZE MM	Each ₹	OD INCH	SIZE MM	Each ₹
13/16"	1.6 X 0.35	245	1"	6 X 0.5	158	1.1/2"	11 X 1.0, 1.5	334
	2 X 0.4	145		6 X 0.75	158		12 X 1, 1.25	334
	2.2 X 0.45	145		6 X 1	158		12 X 1.5	334
	2.3 X 0.4	145		7 X 0.75	158		12 X 1.75	334
	2.5 X 0.45	145		7 X 1	158		14 X 1, 1.25	334
	2.6 X 0.45	145		8 X 0.75	158		14 X 1.5	334
	3 X 0.5	101		8 X 1.0	158		14 X 2	334
	3.5 X 0.6	101		8 X 1.25	158		15 X 1.0	334
	4 X 0.35, 0.75	101		9 X 0.75	158		15 X 1.5	334
	4 X 0.7	101		9 X 1.0	158		16 X 1.0	334
	4.5 X 0.5	101		9 X 1.25	158		16 X 1.5	334
	4.5 X 0.75	101		10 X 0.75	158		16 X 2	334
	5 X 0.5, 0.75, 0.90	101		10 X 1.0	158		18 X 1.0	334
	5 X 0.8	101		10 X 1.25	158		18 X 1.5	334
	5.5 X 0.5, 0.90	101		10 X 1.5	158		18 X 2.0	334
	6 X 0.5, 0.75	101		-			18 X 2.5	334
	6 X 1	101		-			20 X 1.5	334
	7 X 0.75	101		-			20 X 2.5	334
	7 X 1	101		-			-	
2"	20 X 1.5, 2.5	511	2.1/4"	27 X 1.5, 3.0	1034	2.1/2"	34 X 1.5	1458
	22 X 1.5, 2.5	511		28 X 1.5	1034		35 X 1.5	1458
	24 X 1.5	511		30 X 1.5, 3.5	1034		36 X 1.5	1458
	24 X 3	511		32 X 1.5	1034		36 X 4.0	1458
	25 X 1.5	511		33 X 1.5	1034		40 X 1.5	1458
	26 X 1.5	511		33 X 3.5	1034		-	
3"	34 X 1.5	1644	4"	45 X 1.5	2416		-	
	35 X 1.5	1644		46 X 1.5	2416		-	
	36 X 1.5, 4.0	1644		48 X 1.5, 5.0	2416		-	
	38 X 1.5	1644		50 X 1.5	2416		-	
	39 X 4	1644		52 X 1.5	2416		-	
	42 X 4.5	1644		55 X 1.5	2416		-	
	45 X 1.5	1644		60 X 1.5	2416		-	

MOQ Matrix	
OD	QTY
2.1/4"	5
2.1/2"	5
3"	3
4"	3

High Speed Steel

ALL RATES ARE IN RUPEES PER PIECE (Excl. of GST)

SIZE INCH	OD INCH					
	1" Each ₹	1.1/2" Each ₹	2" Each ₹	2.1/2" Each ₹	3" Each ₹	4" Each ₹
1/8"	807	855	-	-	-	-
1/4"	-	957	-	-	-	-
3/8"	-	1123	1376	-	-	-
1/2"	-	-	1833	-	-	-
3/4"	-	-	1912	3387	-	-
1"	-	-	-	3823	4444	-
1.1/4"	-	-	-	-	5197	6204
1.1/2"	-	-	-	-	-	6674
2"	-	-	-	-	-	-

Carbon Steel

ALL RATES ARE IN RUPEES PER PIECE (Excl. of GST)

SIZE INCH	OD INCH					
	1" Each ₹	1.1/2" Each ₹	2" Each ₹	2.1/2" Each ₹	3" Each ₹	4" Each ₹
1/8"	436	555	-	-	-	-
1/4"	-	705	-	-	-	-
3/8"	-	738	956	-	-	-
1/2"	-	-	1057	-	-	-
3/4"	-	-	1376	1745	-	-
1"	-	-	-	1928	2147	-
1.1/4"	-	-	-	-	2583	-
1.1/2"	-	-	-	-	-	3119
2"	-	-	-	-	-	3690

MOQ Matrix

OD	QTY
1"	10
1.1/2"	10
2"	5
2.1/2"	5
3"	3
4"	3

High Speed Steel Dies Nuts

ALL RATES ARE IN RUPEES PER PIECE (Excl. of GST)

Across Flat	BSW/BSF/UNC/UNF	BSP	METRIC MM	Each ₹
0.71	1/8" to 1/4"	-	3 to 6	339
0.82	5/16"	-	7 to 8	403
0.92	3/8"	1/8"	9 to 10	432
1.01	7/16"	-	11	593
1.10	1/2"	1/4"	12 to 13	657
1.30	9/16", 5/8"	3/8"	14 to 16	834
1.48	11/16", 3/4"	-	18 to 20	993
1.67	7/8"	1/2", 5/8"	21 to 22	1347
2.05	1"	3/4"	24 to 26	2086

Carbon Steel Dies Nuts

ALL RATES ARE IN RUPEES PER PIECE (Excl. of GST)

Across Flat	BSW/BSF/UNC/UNF	BSP	METRIC MM	Each ₹
0.71	1/8" to 1/4"	-	3 to 6	129
0.82	5/16"	-	7 to 8	139
0.92	3/8"	1/8"	9 to 10	153
1.01	7/16"	-	11	289
1.10	1/2"	1/4"	12 to 13	369
1.30	9/16", 5/8"	3/8"	14 to 16	403
1.48	11/16", 3/4"	-	18 to 20	448
1.67	7/8"	1/2", 5/8"	21 to 22	593
2.05	1"	3/4"	24 to 26	804

High Speed Steel Ground Thread Dies



ALL RATES ARE IN RUPEES PER PIECE (Excl. of GST)

OD x THICKNESS	SIZE	Each ₹	OD x THICKNESS	SIZE	Each ₹
16 X 5	1.6 X 0.35	977	30 X 11	10.0 X 1.00	1011
			-	10.0 X 1.25	1011
20 X 5	1.6 X 0.35	977		10.0 X 1.50	1011
	2.0 X 0.40	756	-	-	
	2.5 X 0.45	756	38 X 10	12.0 X 1.00	1555
	2.6 X 0.45	756	-	12.0 X 1.25	1555
	3.0 X 0.50	657	-	12.0 X 1.5	1555
	4.0 X 0.70	657	-	14.0 X 1.00	1555
			-	14.0 X 1.25	1555
20 X 7	5.0 X 0.80	657	-	14.0 X 1.5	1555
	6.0 X 1.00	657	-	-	
			38 X 14	12.0 X 1.75	1555
25 X 9	7.0 X 1.00	963	-	14.0 X 2.00	1555
	8.0 X 1.00	1011	-	-	
	8.0 X 1.25	963	-	-	

* All dies are in M2 Steel, we can quote for M35 Steel on request.

* Gun nose dies can be offered on request.

MOQ Matrix	
OD	QTY
16X5	20
20X5	20
20X7	20
25X9	10
30X11	10
38X10	10
38X14	10

Terms and conditions

1. This price list supercedes all our previous price lists.
2. Prices are exclusive of GST rate.
3. The prices quoted in this price list are the maximum retail prices and Dealers / Stockist are free to sell goods at prices lower than the prices fixed by the company."
4. Prices are subject to revision without prior notice.
5. For LH Thread - 35% add to std. price.
6. All legal proceeding are subjected to Mumbai jurisdiction.



High Performance Cutting Tools

HEAD OFFICE

Forbes & Company Limited

Forbes Building, Charanjit Rai Marg, Fort, Mumbai 400 001 | **Telephone:** +91 (0) 22 61358958 | **Email:** sales@forbes.co.in

DIVISIONAL SALES OFFICES ADDRESS / PH. NO.

AHMEDABAD

1st Floor, Pranjivay Building,
Opp. Bata Showroom, Near Times Of India,
Ashram Road, Ahmedabad - 380009
Telephone: +91 (0) 79 26587769, 079-26580741
Fax: 079-26584618

BENGALURU

Classic Building, 3rd Floor, 24 Richmond Road
Bengaluru - 560025
Telephone: +91 (0) 80 43230129
Fax: +91 (0) 80 43230110

CHENNAI

Catholic Centre, 1st Floor,
108, Armenian Street,
Chennai - 600001
Telephone: +91 (0) 44 25389890/95,
Fax: +91 (0) 44 25360872

NEW DELHI

8F, 8th Floor, Vandana Building,
Tolstoy Marg, New Delhi - 110001
Telephone: +91 (0) 11 43000120/107

KOLKATA

222, Circular Mansion, 1st Floor,
A.J.C. Bose Road,
Kolkata-700 017
Mobile: +91 (0) 70 91193999

MUMBAI

Forbes Building, Charanjit Rai Marg,
Fort, Mumbai 400 001
Telephone: +91 (0) 22 61358958

PUNE

H.No.1195/5, Bhosale Heights, 4th Floor,
Opp. Deendayal Hospital, Fergusson College Road,
Pune 411005
Telephone: +91 (0) 20 48509111

AURANGABAD

B-13, MIDC, Waluj,
Aurangabad - 431133
Telephone: +91 (0) 240 2553422